



Wednesday, the 22<sup>nd</sup> June

**Ing. Cyril AVARE**  
**Sales director Central & Eastern Europe**



## ■ Index

1. ARCIL Group in a glance
2. ARCIL FFS technology
3. Packaging material applications
4. Innovation

# Arcil group | Presentation



## AGRO-ALIMENTAIRE **FOOD**

produits laitiers frais  
plats cuisinés  
boulangerie/pâtisserie...  
*fresh dairy products*  
*ready meals*  
*bakery products/pastries...*



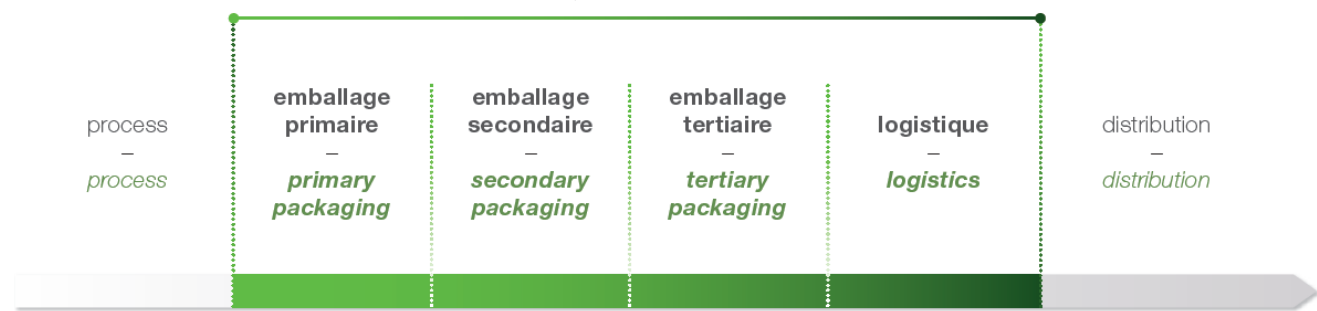
## PRODUITS MÉNAGERS **HOME CARE**

lessive  
produits de nettoyage...  
*detergent*  
*cleaning products...*



## LUXE **LUXURY GOODS**

cosmétiques  
spiritueux...  
*cosmetics*  
*spirits...*



# Arcil group | Presentation



COMPLETE LINE ENGINEERING, TURNKEY PROJECT MANAGEMENT



Each hour, 10 million cups are filled by Arcil machines



Villejuif plant (Paris S)



Corbeil Essonne plant (Paris S)



Puisseux-Pontoise plant (Paris N-W)

- ▶ **Worldwide leader of ultra-clean Form Fill Seal machines**
- ▶ **TO 2010: >74m€**
- ▶ **320 persons**
- ▶ **5000 m<sup>2</sup> workshop**
- ▶ **More than 350 machines are running in 50 countries**
- ▶ **ARCIL range from 4000 to 100 000 cups/h (10ml to 1l)**



# Arcil new machine references | partial list



CILAM



VIETNAM DAIRY PRODUCTS COMPANY - VINAMILK



# Arcil FFS principle | cups example

Paper / PE lid for cup sealing

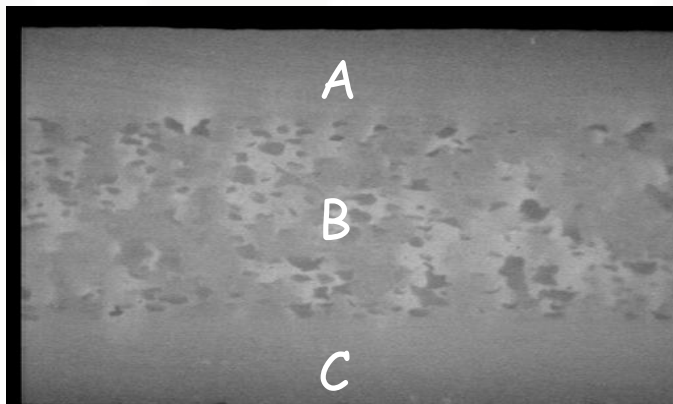
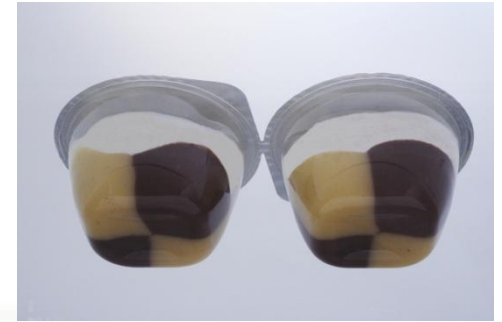
Side wall paper label for marketing communication and top load resistance

Body of cups made in thermoformed plastic



# Plastic material | Tendencies

- r-PET
  - Using standard PET Arcil line
- PS foam
  - -20% in weight
  - +5% thickness
  - Widely used on Arcil line



## PS foam 1:

A : compact PS 25 %  
Density : 1,05 g/cm<sup>3</sup>

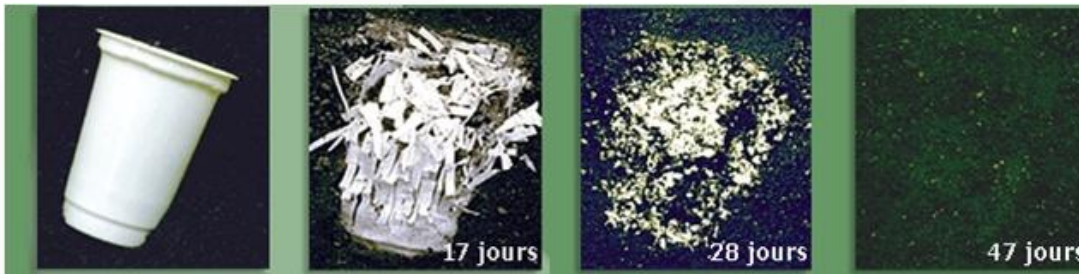
B : Foam PS 50 %  
Density : 0,6 – 0,7 g/cm<sup>3</sup>

C : compact PS 25 %  
Density : 1,05 g/cm<sup>3</sup>

# Plastic material | Tendencies

- **PLA**

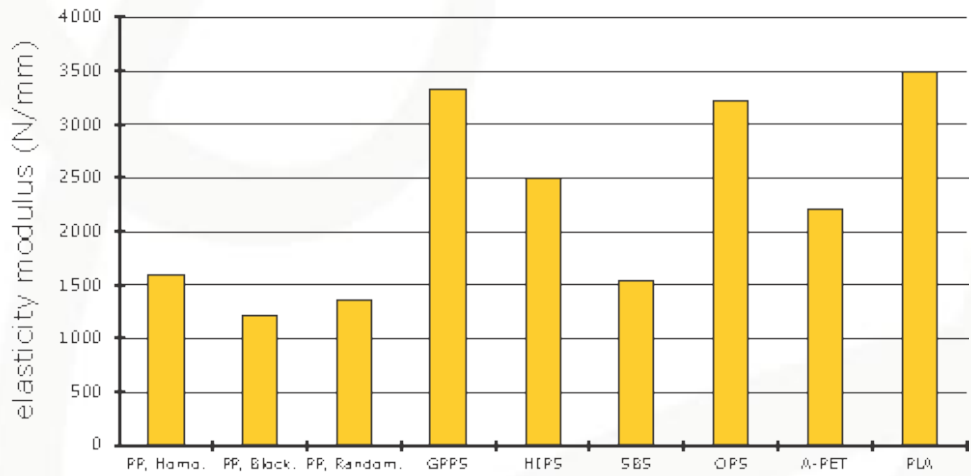
- ❑ PLA = Polylactic acid
- ❑ 93 to 95% using renewable resources, such as corn starch (PLA 1)
- ❑ Biodegradable thermoplastic,
- ❑ 43% less fossil resources / 25% less CO2
- ❑ Higher cost
- ❑ Limited suppliers



*In composting machine at 60° C*

*Source: CEDAP*

# Plastic material | comparison



Material	PCI MJ/kg
PE	43
PP	44
PS / PSE	40
PVC	17
PET	22
PLA	18

# PLA material | Arcil applications

Technology leadership  
3 Arcil FFS machines are running with PLA



# Thank you !

Visit our video website : [www.arcil.fr](http://www.arcil.fr)



SOLUTIONS

SKIP Intro ▶

**Ing. Cyril AVARE**  
**+33 6 26 59 02 00**  
**ca@arcil.fr**

